

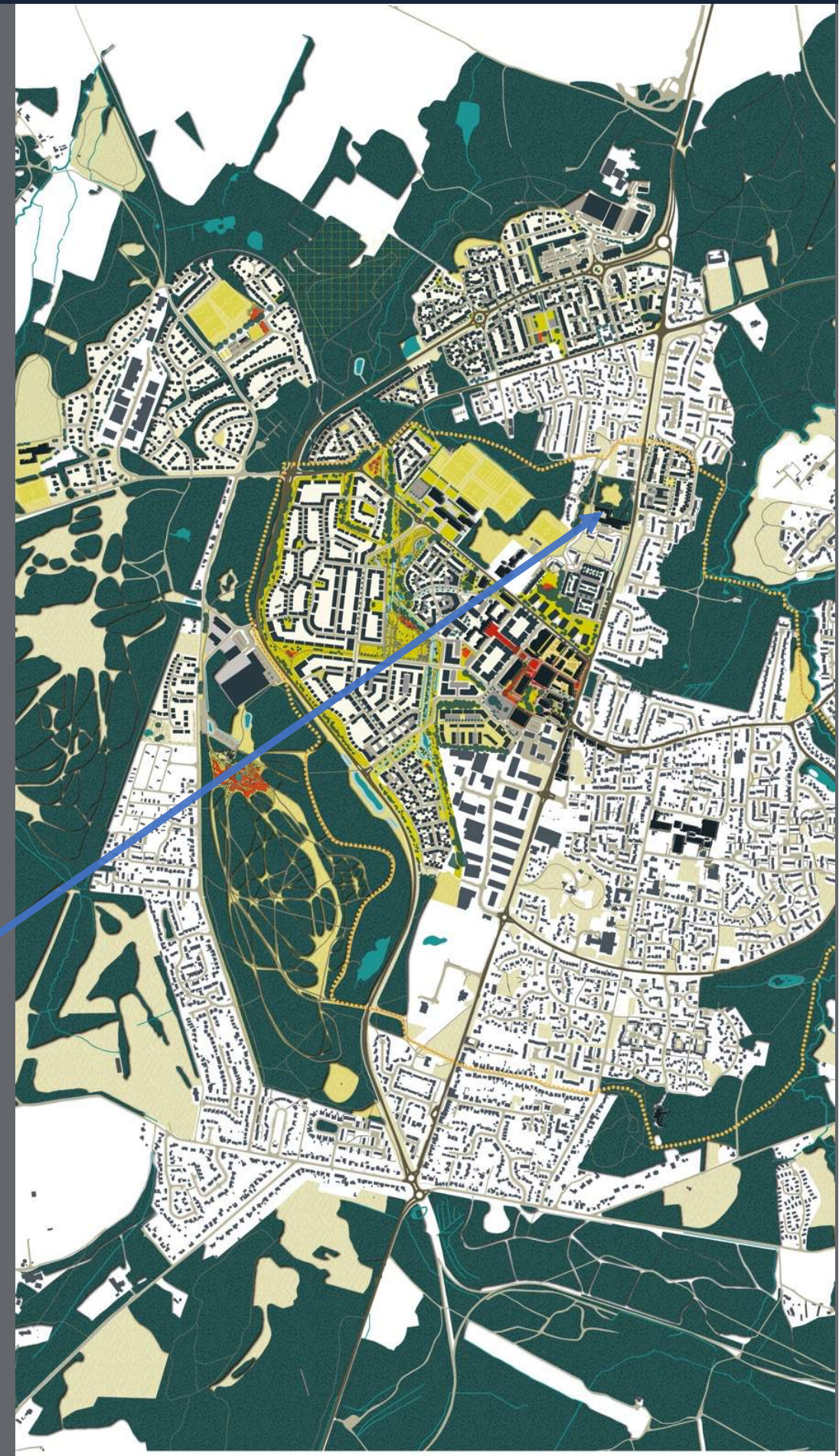


# PRINCE PHILIP PARK



In April 2015 outline planning was granted for:

- **2,400 new homes**
- New Town Centre of retail / leisure space
- New Leisure Centre
- New secondary school and extended primary school
- Extensive areas of public open space, play areas and 54 ha of SANG
- Relief Road and Link Road



**One job** created for every new home built, and build a **new Town Centre**

**Housing** – create affordable, balanced and sustainable communities

**Care** of the environment

**Community Building Social Value** – investment of £54.0M through s106 agreement, £50.0M from Government and £20.5M of direct investment in community assets, schools, parks and leisure spaces

**Risk Management** – anticipation of market cycles and managing challenges/ problems faced

**Innovation** – fibre to the home/ 5G/ VOCA transport service



**Start ups** – over 80 businesses supported

**Bordon Enterprise Park** – more than 30 businesses supporting more than 435 jobs

**Apprenticeships** – more than 40 apprentices supported to date in the town

**Town Centre** – more than 80 jobs at the Shed and Leisure Centre, with 650 more to come once the town centre venues open

# SIGNAL



Making Whitehill & Bordon the Best Place in the UK  
to run a small business





# Our activities:



- Renovate and sublet flexible affordable commercial space



- Create communities within which business owners grow, hire and scale



- Form a crucial bridge between small business and the wider regeneration project



# Our numbers:

-  206 businesses helped with offices, support and training to date
-  39 new jobs created by our SiGNAL tenants in the last two years
-  15000 sq ft of empty buildings renovated and made into affordable offices and workshops

# SIGNAL



Space available at Chieftain House within 4,000 square feet





**Block B** 42 apartments,  
offices and local retail  
**Easter 2024**

**4. Mess Hall** opens  
**Easter 2024**

**Leisure Centre**

**The Shed**

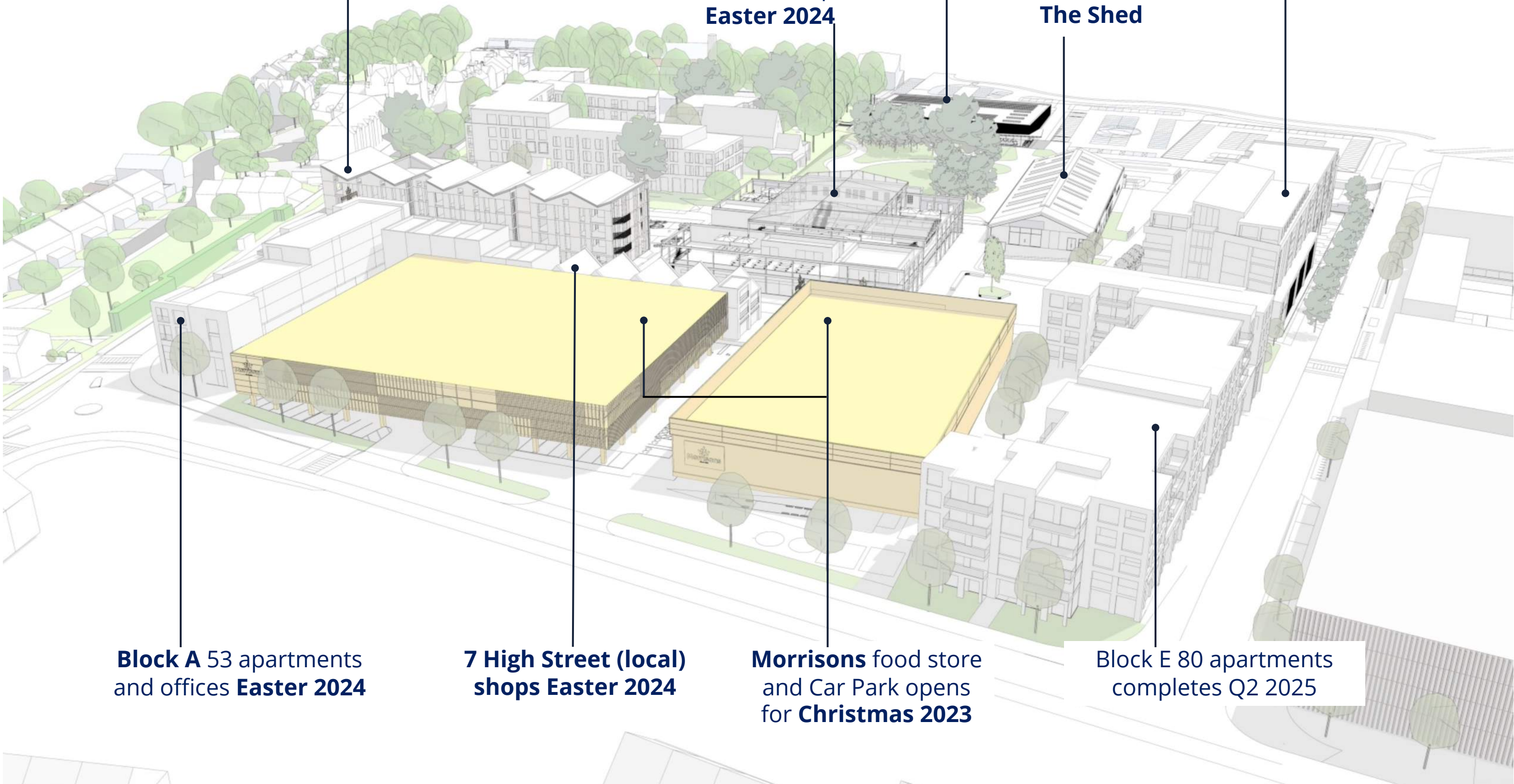
**Health Hub** (80  
apartments above)  
target **Q4 2024**

**Block A** 53 apartments  
and offices **Easter 2024**

**7 High Street (local)**  
**shops Easter 2024**

**Morrisons** food store  
and Car Park opens  
for **Christmas 2023**

**Block E** 80 apartments  
completes **Q2 2025**







## MESS HALL – EVENTS AND ENTERTAINMENT





**July 9<sup>th</sup> - Night at the Proms  
The Shed**

**July 9<sup>th</sup> – Ibiza  
brunch at BOSC**

**July 14<sup>th</sup> – Open Mic  
Night at The Cube**

**July 31<sup>st</sup> – Scoot  
Open air  
Shakespeare at  
BOSC**

**August 3<sup>rd</sup> – lunch with  
a superhero at The  
Shed**

**August 17<sup>th</sup> – Princess  
lunch at The Shed**



Live music, BBQ and of course, award winning ales. Tickets include admission, a free glass and programme





# PRINCE PHILIP PARK