



Nature and Heritage Rubbings Trail at Hogmoor Inclosure

Follow the mapped trail to discover more about the wildlife and history of **Hogmoor Inclosure**. Hunt for 11 wooden posts with metal plaques. Use a wax crayon to take a rubbing of each plaque and reveal a picture.



Hogmoor Inclosure is open to all, every day of the year. It features 54 hectares of wood and heathland for you to explore and enjoy. It has an extensive network of footpaths, a café, toilets, natural play area and a free car park and cycle parking.





Red deer

Where you are standing was once part of a larger Medieval royal hunting forest where King John and King Edward I visited and built hunting lodges. There was once a great herd of red deer living here.

Did you know? A forest does not always have trees! It would have been an area subject to Forest law and was often open heath - which is good for chasing deer on horseback.

Rubbing area



Bofors anti-aircraft gun

Look closely at the unusual concrete structure built in the ground. This is a rare surviving example of a Second World War anti-aircraft Bofors gun emplacement. There is also a radar trailer nearby that captured important information to locate enemy planes.

Did you know? The gun would have been wheeled in and used to defend Bordon Camp, Longmoor Camp and the Longmoor Military Railway which were in use as an assembly area for D-Day.

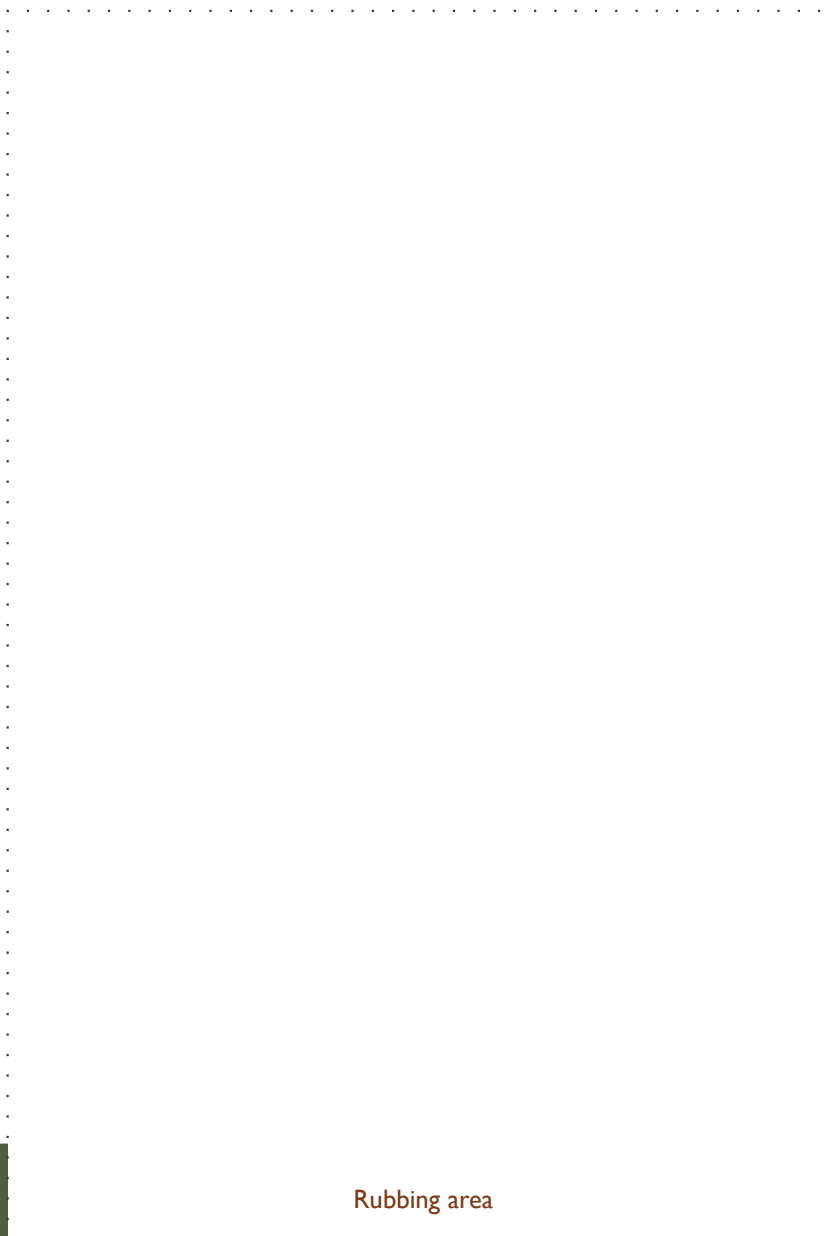
Rubbing area



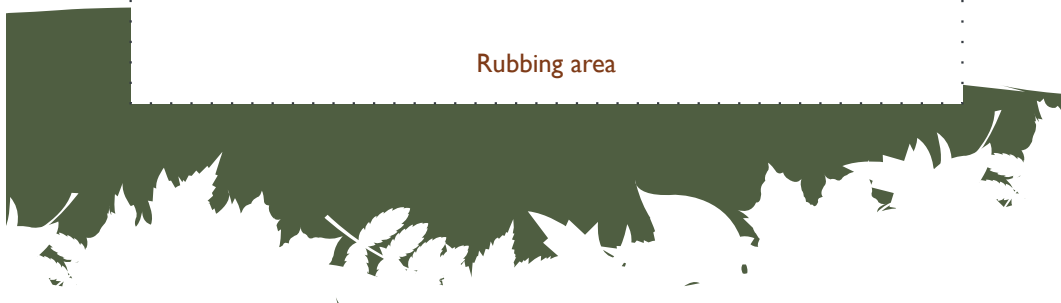
Carved wooden sentinel

Have you spotted the carved sculpture of a sentinel? As you explore the site see if you can spot any more of these life-sized figures who stand guard over the site. Look out for festive decorations too at different times of year.

Did you know? The wood that forms these sculptures was sourced from Hogmoor Inclosure.



Rubbing area





Scots pine needles and cones

One of the main tree species you will see in Hogmoor are Scots pine - Britain's only native pine tree. They grow well on drier, sandy soil and were originally planted here as a timber crop. As a conifer they keep their needle shaped leaves all year round and have protective cones which release seeds to grow into new trees in warm, dry weather.

Did you know? Scots pine needles are high in vitamin C and were once used to make a tea which was useful in winter time when less fruit and vegetables were available.

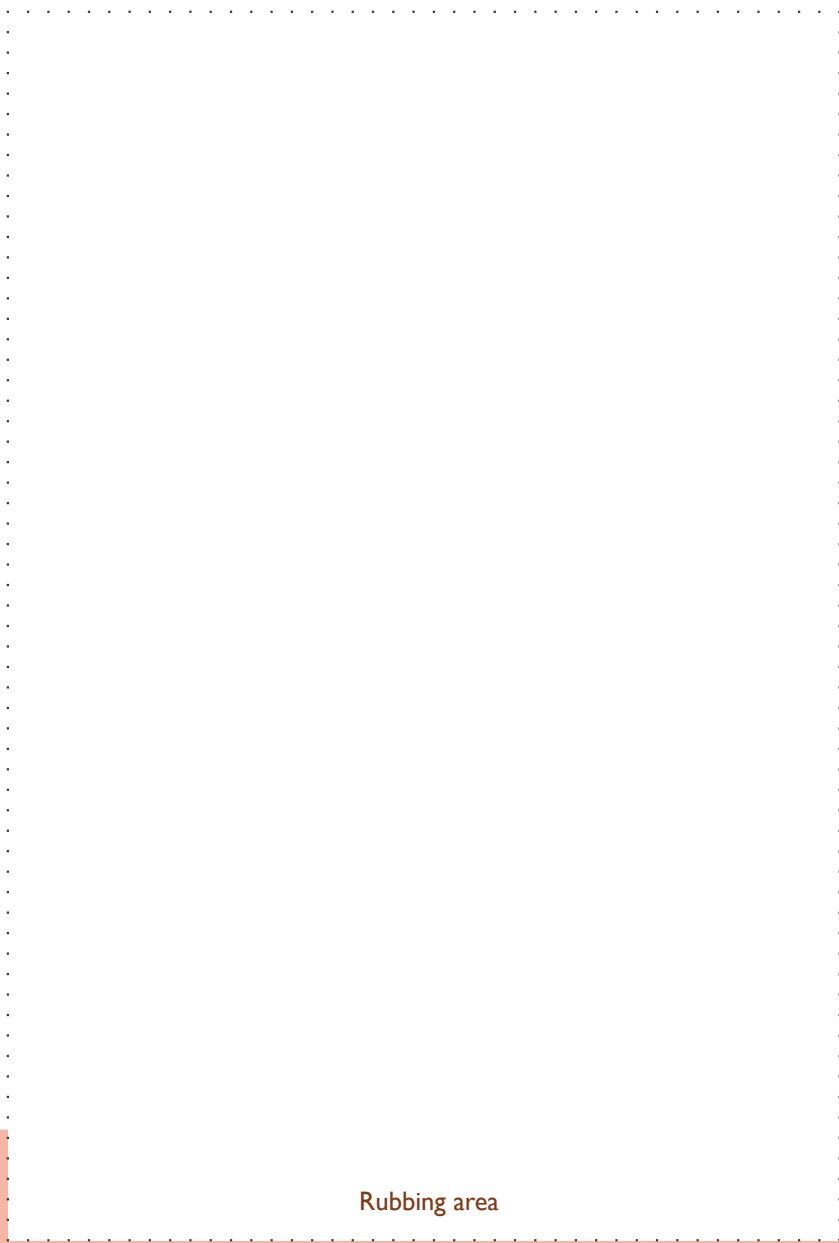
Rubbing area



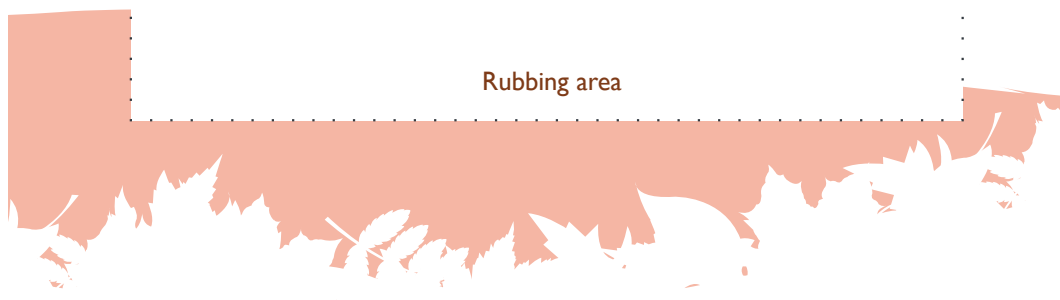
Pipistrelle bat

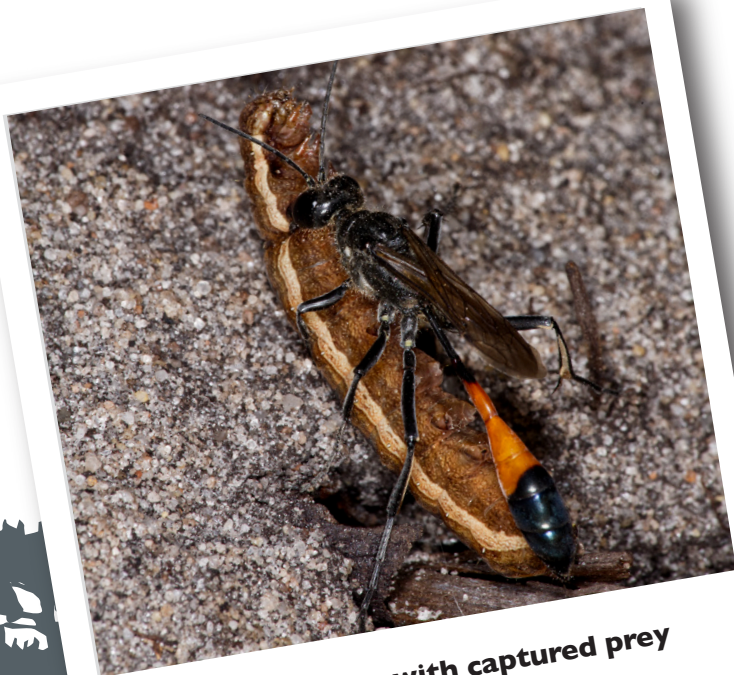
In early summer, female bats gather together in warm, safe places like roof lofts in homes to have their babies. You are now standing next to a purpose-built bat maternity roost. Look up and see if you can spot little gaps in the tiles where bats can fly in and out.

Did you know? The law protects all bat species, their breeding sites and resting places.



Rubbing area





Solitary sand wasp with captured prey

Lots of different solitary bees and wasps have been found in Hogmoor Inclosure – over 150 different species! Many of them make their nests in the warm sandy banks. Keeping these clear of dense vegetation is important in order to provide suitable nesting places.

Did you know? Unlike social species, in solitary bees and wasps a single female will make and stock many nests during her short lifetime but will never see her offspring.

Rubbing area



Rubbing plaque post



KEY

- SITE BOUNDARY
- PEDESTRIAN ACCESS POINTS
- WOODLAND
- FOOTPATH
- - - LEGION TRAIL (PART SURFACED ROUTE)
- REME TRAIL
- GILBERT WHITE TRAIL
- - - GREEN LOOP
- PUBLIC RIGHT OF WAY
- WC TOILETS – including Changing Places toilet with Baby Changing facilities and Family Room
- P PARKING
- CHILDREN'S PLAY AREA
- THE BEEHIVE
- Community space for hire
- CAFE HOGMOOR
- BIRD VIEWING POINT
- CYCLE PARKING
- HEATHLAND AREA
- POND
- ART INSTALLATION
- BAT BUNKER AND ROOST
- PICNIC AREA
- SEATING AREA
- DOG TRAINING AREA
- BRONZE AGE TUMULUS
- WWII ANTI-AIRCRAFT GUN EMPLACEMENT



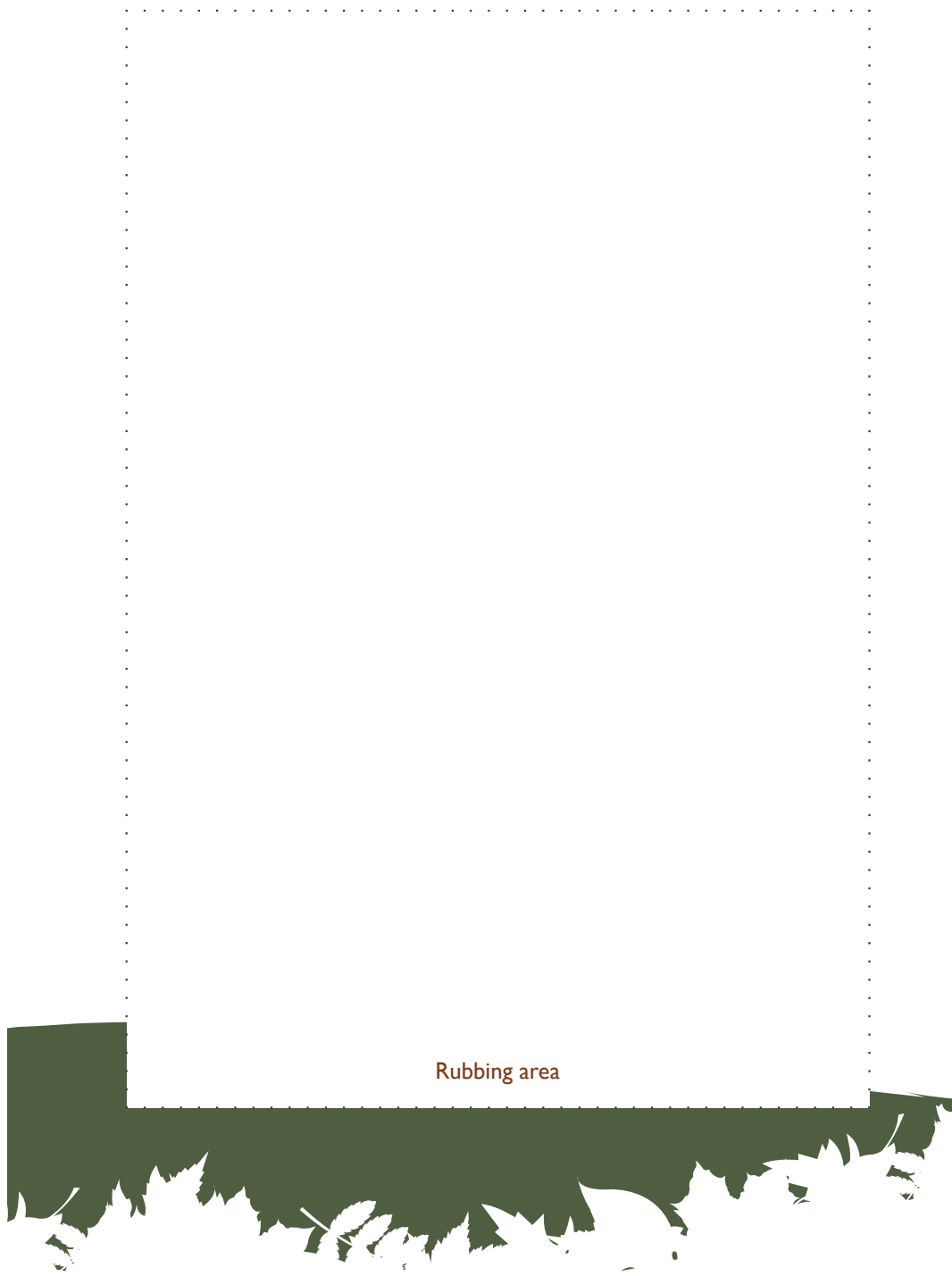
Nightjar

This elusive ground-nesting bird travels up from Africa and arrives in April or May.

If you are exploring the area at dusk, listen for their unusual “churring” call and clapping winged flight, used to defend their breeding territory.

Nightjars lay their eggs directly on the ground, often in heather and rest here during the daytime. They are very vulnerable to disturbance. Please stick to the paths and keep dogs on leads or close to you during the summer months.

Did you know? Nightjars have large eyes perfect for hunting insects especially on moonlit nights and a wide mouth with sensitive bristles to help funnel in prey such as moths, dragonflies and beetles as they fly.



Rubbing area



Grass snake

Hogmoor provides vital habitats to support important reptiles such as grass snakes, slow worms and common lizards. Dotted around the site are corrugated metal reptile refugia to help survey the populations.

The parish of Whitehill and Bordon is the only place in the country where you can find all 12 native breeding reptiles and amphibians, meaning that our local greenspaces are important, and need to be protected and managed correctly.

Did you know? The UK's longest snake is the grass snake. These green and yellow creatures are harmless to humans but love to eat frogs, fish and even birds.

Rubbing area



Tank

Hogmoor Inclosure became the tracked vehicle testing ground for the School of Electrical and Mechanical Engineering from the 1960's. Much of the landscape seen today including ponds and deep cut-throughs were created by tank activity.

Did you know? Bordon camp was home to the Canadian Army during WWI & II and there was a military railway that ran alongside Hogmoor Inclosure, which is now a road.



Rubbing area



Emperor dragonfly

If you spot a small flash of blue and green darting around the wet areas of Hogmoor in June to August you might have spotted an emperor dragonfly. One of Europe's largest dragonflies, they feast on butterflies, catching and eating them mid-flight. Dragonflies lay their eggs in or near water and start life looking very different. They begin as larvae that swim in water, often for 1-2 years before transforming into adults who can fly.

Did you know? Dragonflies have existed on earth since before the dinosaurs and once had a wingspan of 2 ½ feet! Dragonflies have the biggest eyes in the insect world.

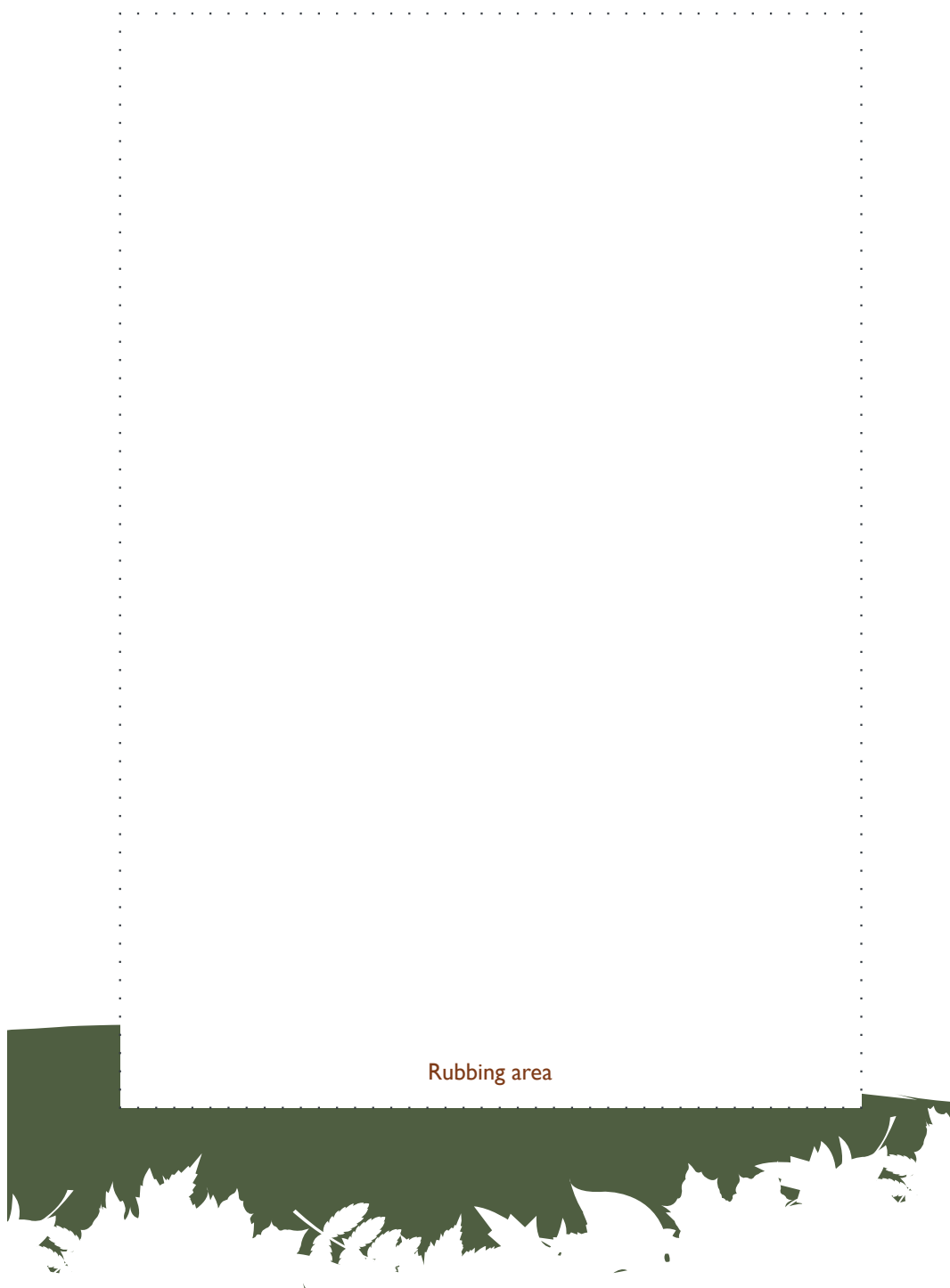
Rubbing area



WWII bomb found at Hogmoor Inclosure

In 2019 a German World War II unexploded bomb was discovered buried in the sand close to Hogmoor Café. It was detonated safely in a controlled explosion.

Did you know? 300 tonnes of sand was used to construct a "blast wall" to allow the bomb to be safely detonated. The blast was heard 15 miles away.



Rubbing area



Well done explorers!

You have successfully completed the brass rubbing trail at
Hogmoor Inclosure

Send us your feedback or photos if you would like to see them
on our social media pages.



www.facebook.com/deadwatervalleytrust/



rangers@deadwatervalleytrust.co.uk

Find more activities at:

www.thelandtrust.org.uk/space/hogmoor-inclosure/

www.deadwatervalleytrust.co.uk





Whitehill & Bordon Regeneration Company (WBRC)

WBRC is a joint venture between Dorchester Regeneration and Taylor Wimpey appointed by the Defence Infrastructure Organisation to redevelop the former barracks. Prince Philip Park is part of one of the most exciting, innovative and largest regeneration projects in the UK. Their vision is to make Whitehill & Bordon one of the most desirable places to live, work and play in the region.

www.princephilipark.co.uk

Land Trust



The Land Trust is a national land management charity with responsibility for managing over 80 parks and greenspaces across the UK. Our vision is to deliver high quality green spaces that create environmental, social and economic benefits. Here we are working in partnership with Deadwater Valley Trust to undertake the day-to-day care and enhancement of the site to provide maximum benefit to wildlife and the local community.

www.thelandtrust.org.uk/space/hogmoor-inclosure/

Deadwater Valley Trust (DVT)



DVT rangers manage the day-to-day running of Hogmoor Inclosure. DVT is a local environmental charity in Whitehill & Bordon which has successfully provided over thirty years of management of the Deadwater Valley Local Nature Reserve, and more recently, Bordon Inclosure.

www.deadwatervalleytrust.co.uk

Whitehill & Bordon Community Trust (WBCT)



WBCT is a registered charity set up in October 2018 to develop community engagement alongside the regeneration of Whitehill & Bordon.

WBCT works in partnership with residents, community organisations and local authorities to create bespoke community projects and events and manages facilities for the benefit of the whole community. These include Café Hogmoor and the Beehive multi-purpose room.

www.wb-ct.org

The Land Trust, 7 Birchwood One, Dewhurst Road,
Birchwood, Warrington, WA3 7GB
www.thelandtrust.org.uk

Registered Charity No. 1138337
Registered Company No. 5077263