

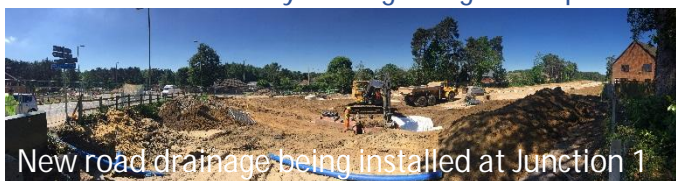
Whitehill & Bordon Relief Road

Welcome to the 6th Edition of the Whitehill and Bordon Relief Road Newsletter. Providing you with the latest updates and future plans on Phase 2 of the Relief Road, as well as events and interesting information about the work the team are doing both on site, and in your community.



Progress Update

Junction 1 – Liphook Road is closed at the interface with the A325 to construct the new double roundabout junction. Three-way temporary traffic signals are in use to facilitate a number of service diversions in the area.
 Junction 1-2 – Railway cutting filling is complete.



New road drainage being installed at Junction 1
 Junction 2 - The new access road to the Garrison Housing development is underway in readiness for construction of the new houses.
 Junction 2-3 – Drainage is being installed where we have excavated for the road.
 Junction 3 – Existing services have been protected with concrete slabs and a number of existing services have been diverted.
 Junction 3- Phase 1 – Temporary foundations have been constructed as a crane platform ready for installation of the Oxney Moss drainage culvert.

Upcoming Open Event: 13 July 2017

Following the popular exhibition in March, we will be holding another one to update you on current progress and discuss future planned relief road activity. In addition, design work on the current A325 Public Realm Enhancement Scheme will also be on show.

Feedback from the exhibitions is used to help us plan how we deliver the works to minimise the impact as far as possible.

Location: Whitehill Village Hall, Time: 6pm – 8pm

Please come along to meet the team and find out more about our plans.

Keeping You Safe

Public access to the site is not permitted. If you need to cross the works, this can only be done at the designated access points. Thank you in advance for your co-operation.



Hampshire
County Council

enterprise **M3**
Driving prosperity in the M3 corridor

GROWTH
DEALS



carillion

Considerate Constructors

In a recent audit by the Considerate Constructors Scheme, we achieved 'Excellent' in three categories and 'Very Good' in two categories.

- ✓ Appearance - Excellent
- ✓ Community – Very Good
- ✓ Environment – Very Good
- ✓ Safety - Excellent
- ✓ Workforce - Excellent



Although we are pleased with this result, we are continuing to strive for improvements across all categories. www.ccscheme.org.uk

Protecting the environment

Amphibian and mammal tunnels have been installed under the new road to encourage their safe passage across the new road. Special fencing has been installed adjacent to these tunnels to guide them safely through.



We are also re-using soil on site to produce topsoil for landscaping areas.



Community Support

Village Hall Improvements - Carillion are working with the committee members of Whitehill Village Hall to help progress their plans for when they improve and extend their carpark.

School Engagement - We have two site visits planned for Year 9 and 10 Construction pupils from Mill Chase Academy. The aim is to highlight employment opportunities available in the construction industry whilst supporting their learning through real life experiences.

Upcoming Site Activities

Over the next three months, significant activity is planned throughout the site including:

Junction 1

- ✓ forming the new roundabouts
- ✓ diversion of gas/water and BT services

Junction 1-3

- ✓ installing new road drainage
- ✓ earthworks and road capping

Junction 3

- ✓ service diversions and roadworks

Junction 3- Phase 1

- ✓ construction of Oxney Moss Culvert

More information on future traffic management, the scheme, and photographs of progress so far, can be found at:

www.whitehillandbordonreliefroad.com

Did you know?

Our construction equipment such as the bulldozer shown below is now equipped with GPS receivers. Information relating to the 3D design model is fed to these receivers and appears on a screen within the cab. Instead of the driver needing the assistance of site personnel to determine where to dig out material, they can now use the graphics on their screen. This significantly reduces the interface of our workforce with large construction plant making works safer.



Keeping in contact:

We will continue to send you information about the scheme and how it may affect you, however, if you wish to get in contact directly with Hampshire County Council, please email: whitehillandbordon@hants.gov.uk